

58MM Portable MINI Thermal Printer
Instruction Manual



Download Password : 1234
Android BT APP

Notice :

Thanks for using our Portable Printer !

To ensure the safety of storage and transportation, we stick a insulating tape on the metal of the Li-Ion battery . Please kindly take off the insulating tape before its firstly turning on.



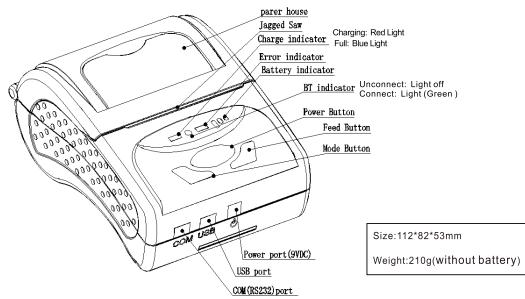
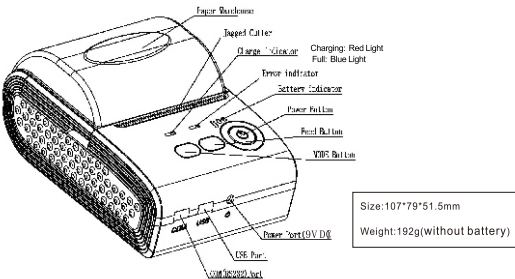
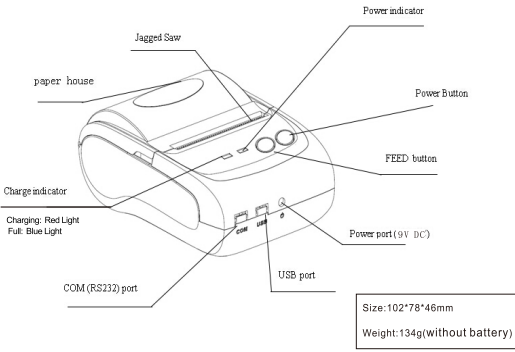
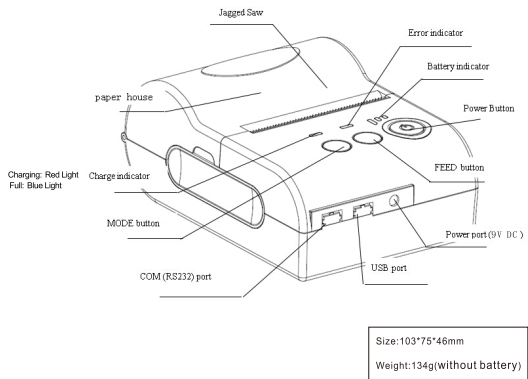
Insulating tape

Warm tip: Please seal the battery and pay attention to the garbage classification when discarding it to avoid the environment pollution .

1.Specification

PrintingMethod: Direct Thermal
Speed:≤90mm/sec
Reliability TPH Life: 100km
Resolution: 203DPI (8dot/mm)
Printing Width: 48mm (384dot)
Paper Width: 58±01mm
Roll Diameter: φ≤40mm
Paper Type: Thermal Paper
Power: rechargeable lithium battery/Ni-MH battery
Battery: 7.4VDC, 1500mAh
Charging mode: DC 9V/1.5A
Print parameters: support to download the Logo trademark, support bar-code print.
Support bar-code types: UPC-A / UPC-E / JAN 13 (EAN13) / JAN8 (EAN8) / CODE39 / ITF / CODABAR / CODE93 / CODE128 ; Two-dimensional code: QR CODE
Character size: 384 dots/line
FontA:12*24dots,1.5(W)*3.0(H)mm
FontB: 9*17dots, 1.1(W)*2.1(H)mm
FontC: 9*24dots, 1.1(W)*3.0(H)mm
Simplified/Traditional:24*24dots,3.0(W)*3.0(H)mm
Printing Chinese character: Chinese: simplified Chinese 24x24 point. support GB18030 font library, support Taiwan and HK traditional(complex font)
ANK: ANKcharacters
Language: support for multiple languages
(Support Traditional, Korean, Japanese, etc. must be instructed before purchased)Extended character table:
OEM437/Katakana/OEM850/OEM860/OEM863/OEM865/West Europe/Greek /Hebrew/EastEurope/Iran/WPC1252/OEM866/OEM852/OEM858/Iran I I / Latvian/Arabic/PT1511251/OEM747/WPC1257/Vietnam/OEM864/Hebrew/ WPC1255/Thai

2.Appearance



3.Communication Interface

- 1. RS232(COM) : standard RS232 Communications Protocol
- 2. Bluetooth 2.0/4.0 : standard Bluetooth 2.0/4.0 Communications Protocol
- 3. USB : standard USB Communications Protocol

4-1. RS-232 Serial (COM) Interface

RS-232 is developed according to the EIA standard asynchronous transmission, the specifications are as following:
Data transmission: serial interface
Synchronization: asynchronous
Signal Level: RS-232 level, logic 1:-5.4v, logic 0 : +5.4v
Hardware Flow Control: None
Baud rate: 2400pbs to 115200pbs is optional
Data word length: 8 bits
Stop bit: 1bit
Parity: None

Users can get the current baud rate from the printer self-testing page.
Serial cable: We have made the cable specially using mini port like Mini USB port which connects the printer .The following picture shows the signal definition of the RS-232 Serial interface:

The connection between the printer and host follows the following rules:

Printer	Host
TXD	RXD
RXD	TXD
GND	GND

However, the printer usually works only on receiving data, it doesn't have to respond anything back to the host , then TXD signal can be ignored , and then the connection can be sampled as following:

Printer	Host
RXD	TXD
GND	GND

4-2. Bluetooth Connection

Bluetooth is a proprietary open wireless technology standard for exchanging data over short distances (using short-wavelength radio transmissions in the ISM band from 2400–2480 MHz) from fixed and mobile devices,creating personal area networks (PANs) with high levels of security.

4-2-1. Bluetooth specification

Using blueCore4-Ext chipset, fully compatible with Bluetooth 2.0;
High-sensitivity receive signal, small size, lower consumption
Supporting 1200bps ~ 1382400bps variety of baud rate;
Supporting SPP agreement, the maximum transfer speed is up to 3Mbit / s;

4-2-2. Use “ AT ” command to modify Bluetooth Module ’ s parameters

Notice: The following changes can't be done by user, these should be done in factory by Manufacturer. So if user wants to change these parameters, please inform our sales person before ordering our printers.

Modify name---Send character string “AT+NAMEXXX, feedback “Okname”;

For example, if you want change name to “Bluetooth Printer”, please send string “AT+NAME Bluetooth Printer”.

Modify PIN code--- Send character string “AT+PINXXXX, feedback “Oksetpin”;

For example, if you want change PIN code to “8888”, please send string “AT +PIN8888”.

Emulation: ESC/POS command
Interface: standard RS232/USB, Bluetooth 2.0&4.0(option)/SPP agreement or infrared/IRCOMM agreement (optional)/Android up to 4.0 operation system.
Driver: Win2003/Win2000/Win7/WinXP/VISTA/WIN8/Win10/LINUX
Working Temperature: -10~50℃ ; Humidity: 10~90%

(Note: Default PIN code is “1234”, you only can reset PIN code with four figures.)

Clear Bluetooth address--- Send character string “AT+CLR00”, feedback “Okclear”;

Modify baud rate--- Send character string “AT+BAUDX, feedback “Ok+ current baud rate”; X represents the baud rate code, as following:

1-----1200	7----- 57600
2----- 2400	8----- 115200
3----- 4800	9----- 230400
4----- 9600	A-----460800
5----- 19200	B----- 921600
6-----38400	C-----1382400

For example, if you want to change baud rate to 115200bps, please send string “AT+BAUD8”.

4-2-3. Build connection.

1. Turn on the printer;
2. Search for the Bluetooth device with host device;
3. If there are other Bluetooth devices, please select “LY58”(for example) printer;
4. Enter default pairing code “1234”
5. Pairing succeed.

4-3. USB Interface

The printer is connected by standard Mini USB cable(included in accessories) for communication. The USB type belongs to slave device type.

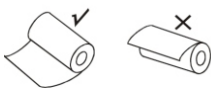
4.The installation of the paper roll

The printer use 58MM thermal paper, and adopt to easy paper loading. So the paper is very convenient install.

Paper diameter Max 40mm.

Thermal paper installation method is as follows:

- (1) Open the printer top cover
- (2) Thermal Paper as follow Graph to put into paper storehouse



- (3) Put out a little of the paper outside printer,then close the top cover.
- (4) Use paper sawtooth tear off redundant paper

Button Operating Instructions

POWER (Blue Light)	FEED (Red Light)	Printer Status
OFF	OFF	Printer Close
ON (Always)	OFF	Printer open and have paper
ON(Always)	Flash	Printer Open , without paper
Under the normal working status, the paper feeding begins when press 【FEED】 button, and stop when loosen 【FEED】 button.		The printer paper feed
Power off the printer, then hold down the 【FEED】 button and press the power button at the same time. Wait 2 seconds ,then loosen the 【FEED】 button,the current setting will be printed out.		The printer Self test
Power off the printer, then hold down the 【FEED】 button and press the power button at the same time. Wait until the power indicator & 【ERROR】 led are both on, and then 【ERROR】 led goes off, then loosen the 【FEED】 button, the language setting status will be printed out.		Transformation in both English and Chinese

Power off the printer, then hold down the 【FEED】 button and press the power button at the same time. Wait until the power indicator & 【ERROR】 led are both on, and then 【ERROR】 led goes out, after, 【ERROR】 led goes on again ,then loosen the 【FEED】 button, the density setting status will be printed out. (It has three levels setting for printing density, it is a circle Low level→Middle level→High level → Low level...., Please switch the density status by repeating operation presented above.)	Set printing density
Power off the printer, hold down the 【MODE】 button and press the power button at the same time. Wait until the power indicator & 【ERROR】 led are both on, and then 【ERROR】 led goes	Hexadecimal printing
out, then loosen the 【MODE】 button. The printer turns into the hexadecimal printing mode and print the presentation.Way to quit hexadecimal printing : The way to quit hexadecimal printing mode is switch off the printer .	



Download Password : 1234
Android BT APP

Part 2 : Operation instructions

1.Open the Android APP

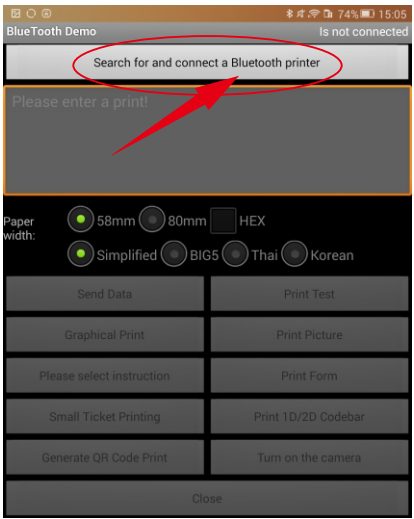
If you installed a Bluetooth demo, click “POSPrinter-BT”

If you installed a USB demo, click “POSPrinter-USB”

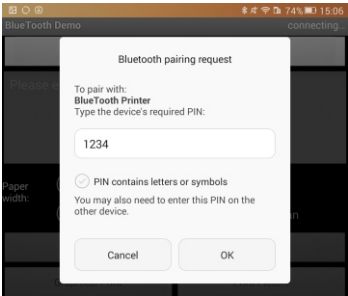
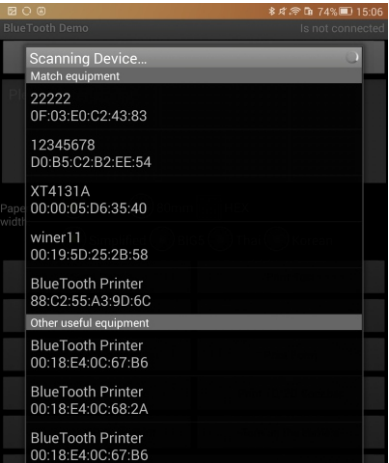
If you installed a demo of network port or WIFI, click “POSPrinter-WIFI”



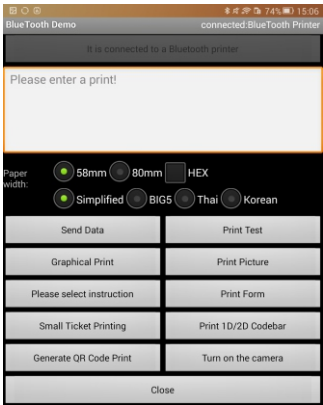
2. After opening the DEMO, you need to connect the printer.
When the port what you connected is Bluetooth
Click “Search and connect Bluetooth printer”



If you need to search for new printers again, click “Scanning Device” and select the printers you want to add.



The connection is successful, as is shown:



Part 1 :

Find the app from the driver file , Then follow the path : “Android SDK---BLUETOOTHDEMO ----bin----BT-POSPrinter.APK ” , and install it into your Android device.

Or scan the below QR code to download the Android app:

5.Operating Manual for Android OS

10

11

12

13

14

6.Operating Manual for IOS APP

1. Download the Test Tools “POS-PrinterV1.0” from App Store,as below:

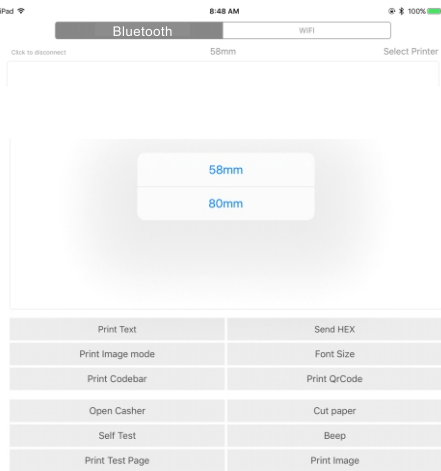


2. Turn on the Bluetooth setting of IOS device , then click “POS-Printer”:



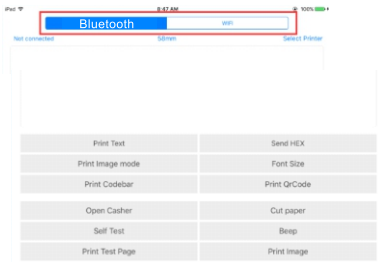
15

3. Into the App of “POS-Printer”, select the paper width as below:

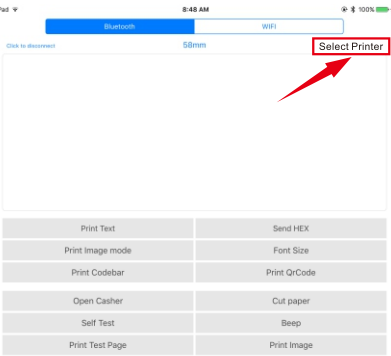


(Image 3)

4. Select the way of communication of printers, “Bluetooth” or “WIFI”:



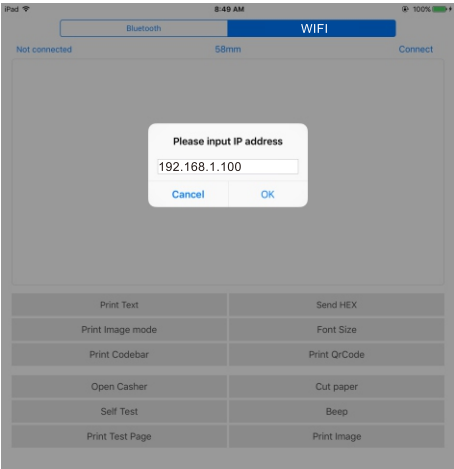
5. If connect with Bluetooth, then you can click “ Select Printer” first, you will search the “Bluetooth Printer” (the default name of printer is Bluetooth Printer), click it to be connected.



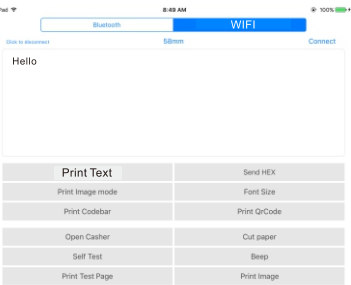
17



6. If connect with WIFI, please make sure that your device WIFI is connected with printer (both of them in the same Network segment). And then click the “ Connect”, enter into the printer IP :



7. If above steps are successful, then you can print text to have a test:



8. Other features of this APP:

- ① Send HEX: In the text box, enter the hexadecimal data, click “Send HEX”, then can send text box hexadecimal data to the printer.
- ② Print Image mode: input data in the text box, click “Print Image mode”, you will be able to convert the contents of the text box into a image printed
- ③ Open Casher: If your printer is connected with the cash drawer, click “open casher”, the drawer will be opened (portable printers without drawer interface, this feature does not work).
- ④ Cut paper: After click on it, the paper will be feed out and cut (portable printers, 58 series of printers without cutter, this feature does not work).
- ⑤ Self Test: Click the “self-test”, the printer will print out a self-test page (because the Bluetooth printer has been connected to the device, then the Bluetooth name or MAC address will be not displayed in the self-test page).
- ⑥ Beep: Click the “Beep”, the printer will beep sound (portable printers, 58 series of printers without buzzer, this feature does not work).
- ⑦ Print test page: Click the “Print Test Page”, the text will print a section of the test, to confirm that the printer

9.The applicable version: can be compatible with IOS6.0 or above versions.

18

19